



Product overview

# Electrical distribution overview

## Low voltage products



# Electrical distribution overview

## Low voltage products

<a href="#">Introduction to ABB low voltage products</a>	1
<a href="#">Support services</a>	2
<a href="#">Earthing &amp; lightning protection</a>	3
<a href="#">Modular DIN rail components</a>	4
<a href="#">Flexible conduit</a>	5
<a href="#">Wire &amp; cable management</a>	6
<a href="#">Switching &amp; control</a>	7
<a href="#">Energy &amp; lighting management</a>	8
<a href="#">Home automation</a>	9
<a href="#">Electrical &amp; mechanical fixings</a>	10
<a href="#">Emergency lighting &amp; central battery systems</a>	11
<a href="#">Hazardous area lighting &amp; enclosures</a>	12
<a href="#">Hazardous area cable protection systems</a>	13

# Introduction to ABB low voltage products

## Committed to supporting our customers

1

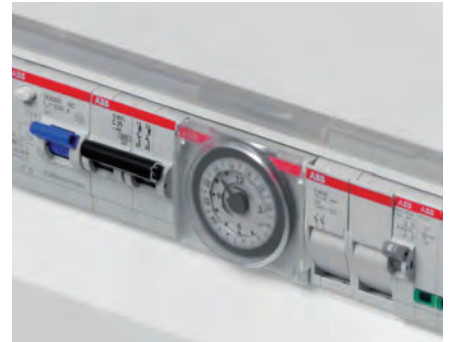


ABB is a market leader in power and automation technologies, providing customers with electrical system solutions to help them protect their people and assets, whilst meeting applicable codes of practice and providing best overall value.

### The power to grow your business

ABB works with electrical distributors to provide end users with a higher level of service and to achieve greater profitability.

Distributors benefit from ABB's brand recognition for innovative, high quality products and solutions, as well as the added benefit of sales support tools and incentives.

From dedicated local support through to advanced e-business tools, ABB can help improve your transactional costs and increase productivity. With enhanced customer service programs and in-depth training opportunities, distributors and wholesalers are at the heart of our business.

### Product training & system design support

Both our sales and technical teams provide training and product awareness to our distributors, with customer CPD seminars managed by market specialists. Support and advice on full system designs, with production of schematics, is also available for our more in-depth solutions.

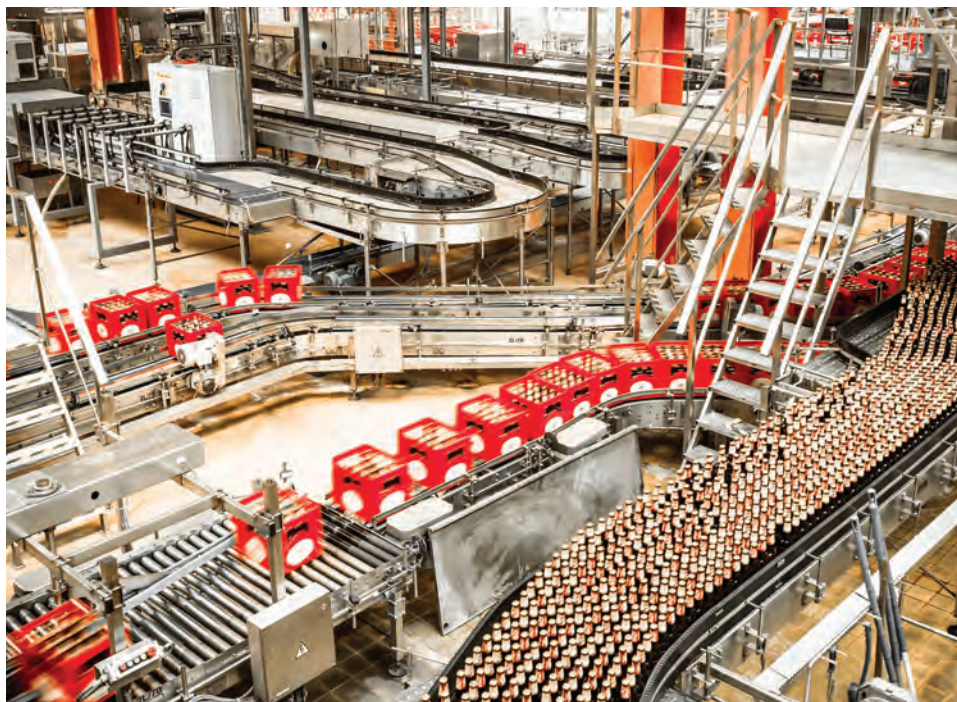
### Market support & expert advice

Our fully trained sales representatives support our distribution partners with joint sales initiatives and customer project discussions, to help drive sales. Our technical experts support project installations, from planning through to construction and MRO.



# Introduction to ABB low voltage products

## Engineered solutions - Designed to perform



Our goal is to ensure we deliver the best performing products through our distribution partners, to our core markets and customers. All backed by full technical customer support.

### Tested performance for optimal reliability

Our products are rigorously tested for market application in line with National and International standards to ensure our customers receive long term, reliable performance from our products - now proven in thousands of installations worldwide.

### Product profiling & stock availability

Our sales team continually supports our distribution partners to ensure the right products are stocked, at the right price. Additionally, special pricing plans may be provided for mutually beneficial projects.

### Clear terms & conditions of sale

All our products are supplied with warranties in accordance with ABB general terms and conditions of sale, a copy of which is available on request.



## Support services

### Technical advice, support & design services

2



At ABB we're focused on ensuring our customers have the best possible product advice and technical support, to ensure their projects run smoothly, on-time and on-budget.

**In many circumstances, a project will require a more in-depth approach than a simple product installation, especially where the application includes the need to adhere to specific National or International standards.**

Given the complexity of many standards, confusion or misinterpretation can easily lead to project delays, budget overruns and costly extra time on-site.

Our aim is to help our customers to avoid these risks, by supporting them fully with professional advice on our product lines and their application to meet current regulatory standards and codes of practice.

Where appropriate we can guide our customers to our product lines which have been certified for use in particular applications.

Technical support is available to both our distribution partners and customers to provide guidance and ensure the most appropriate products and solutions are specified for customer projects.

The technical support and services available include:

- Application advice & product specification
- CAD drawings of products
- System design
- Commissioning of central power supply systems (service & maintenance)
- Training & seminars (for products and standards)

**For further information on our services available please contact your local sales representative, email us [LV.Enquiries@gb.abb.com](mailto:LV.Enquiries@gb.abb.com), or call us on 0333 999 9900.**



## Support services

### Seminars & training

As part of our support services, ABB offer structured training and seminars to help customers develop a greater knowledge and understanding of legislation and standards, promoting informed decision making for project specification.

Our CPD seminars and training aim to provide:


- Critical and relevant facts on changes in legislation, and the impact of these changes on your business
- Guidance on effective methodologies to simplify implementation, and ways of reducing overall labour and maintenance costs



CPD seminars and training can be held at our offices, at customer premises or other convenient locations to suit individual needs. A brief overview of our CPD seminars and training is shown in the table below.

#### Seminars & Training - Technical customer support

##### Overview of CPD seminars and training\*

	Emergency lighting, testing & monitoring
	Central power supply systems
	ICEL risk assessment
	Introduction to metering
	KNX Introduction
	LV Protection & control
	Earthing & lightning protection
	Overview of IEC/BS EN 62305 - Earthing and lightning protection & electronic systems protection to IEC/BS EN 62305
	Overvoltage protection to BS 7671
	Central Power Supply System requirements
	BS 5266 Emergency lighting - Part 1
	Emergency lighting testing & monitoring
	ICEL risk assessment
	Fire detectors
	Changes to fire alarm standard BS 5859
	Lightning protection - Earthing
	Lightning Protection - Surge Protection
	New standards in lightning protection - Understanding
	BS EN 62305:2006
	17th Edition first amendment - Surge protection
	Understanding hazardous areas - LFH Conduit
	Energy saving with variable speed drives

##### Lunch and learn / In-depth technical seminars

Lunch and learn	E-Max 2 product launch
	The new ATS
	Discrimination study workshop
	Fuse vs Fuseless
	Introduction to circuit breakers
	Zone selectivity
	DOC software
	Power quality
	ABB breakers - A technical comparison
	Directional, Differential and Zone Protection
	Communications capabilities with ABB breakers
	ABB Metering capability
	MV Grid connection, MV switchgear and transformer offering

\*Where requested, we can also tailor a course, provide an informal briefing or supply specific training on our product lines

# ABB Low voltage products

## Commercial building example

2

Lightning protection systems [Page 8](#)

Disconnect switches [Page 16](#)

Central battery systems [Page 24](#)

Wire markers & accessories [Page 14](#)

Cable fittings [Page 14](#)

Outdoor lighting [Page 24](#)

Wire terminals [Page 16](#)

Panel boards [Page 10](#)

Meter sockets [Page 10](#)

Industrial connectors [Page 14](#)

Terminal blocks [Page 16](#)

Non-metallic  
flexible  
raceways [Page 14](#)

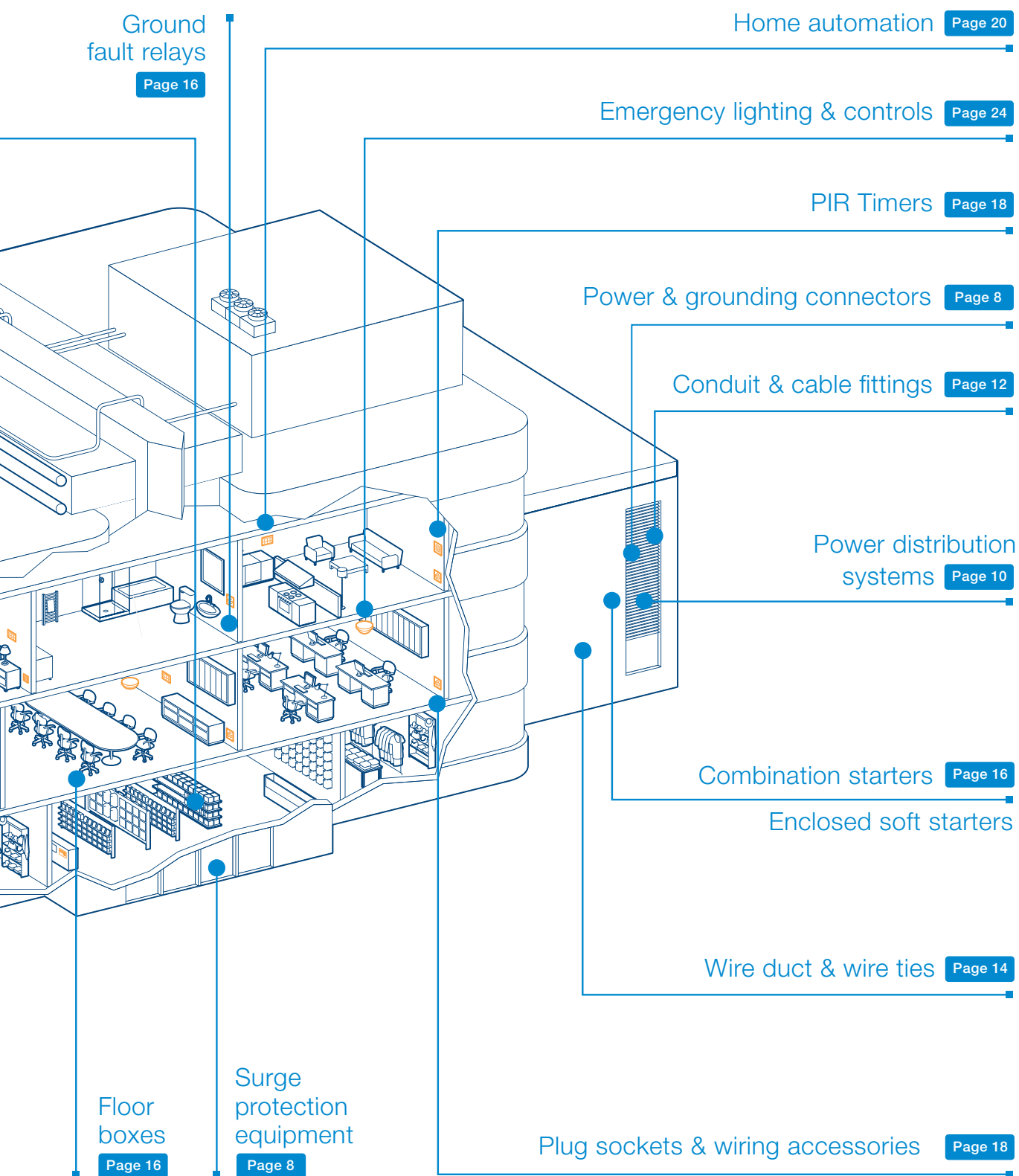
Wire duct,  
wire ties  
and spiral wrap [Page 14](#)

Lighting contactors [Page 16](#)

Push buttons [Page 16](#)

AC & DC  
Enclosed circuit  
breakers [Page 10](#)





# Furse

## Earthing & lightning protection

3



ABB Furse provides world leading earthing, lightning and electronic systems protection solutions. From our own designed and manufactured products, through to risk assessment and systems design, we provide a Total Solution to earthing & lightning protection.

The combined expertise of Furse with ABB's electrical sector experience, allows us to share the knowledge we hold in key industries with our clients. In turn this promotes informed decision making on the best earthing and lightning protection solution to suit our customer's needs.

Furse product lines include:

- Air termination systems
- Lightning protection & earthing conductors
- Conductor clips & clamps
- Earth electrodes & earth bars
- Exothermic joint welding
- AC & DC power, data, signal & telecoms surge protectors

Customers are fully supported with expert advice and detailed training, to ensure a Total Solution to earthing and lightning protection is achieved.

For more details of the extensive range of ABB earthing and lightning protection products please visit our website or contact us direct:

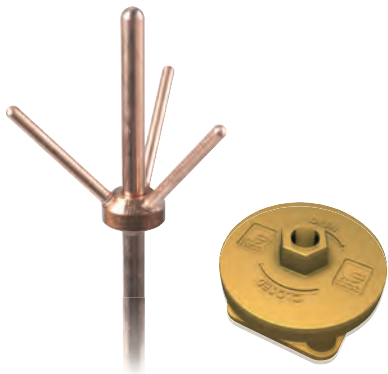
**[www.furse.com](http://www.furse.com)**

**Product brochures available:**

- Earthing & lightning protection; Total solution catalogue

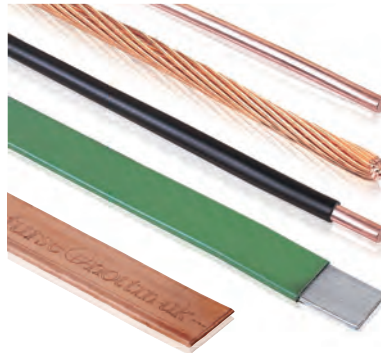
# Furse

## Range overview



### Air terminals

Copper & aluminium air terminals to protect structures against direct lightning strikes



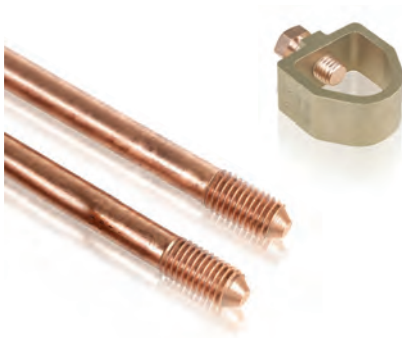
### Bare/PVC covered conductors

High conductivity copper or aluminium tape, solid circular or stranded bare conductor. PVC covered tape and solid circular conductor in colours to match most common building materials.



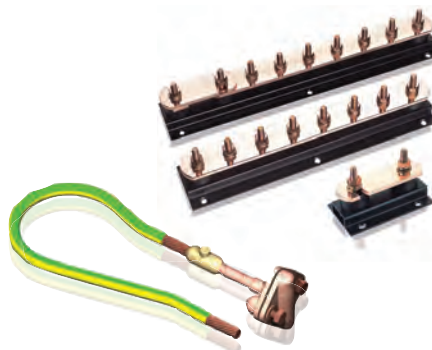
### Conductor clamps & clips

High quality copper or aluminium alloy clips for excellent corrosion resistance and high pull off loads. Square, crossover and test clamps for joining conductors and allowing disconnection and testing. Non-metallic clips for bare or PVC covered conductors.



### Earth rods & clamps

High strength, corrosion resistant solid copper, stainless steel or copperbond earth rods are available. High copper content alloy clamps deliver a low resistance connection to earth conductors, rods and plates.



### Earth bars & earth points

Earth bars provide an efficient way to provide a common earth point, with optional disconnecting links for easy isolation. Standard earth points are available with single or double pre-welded tails for connection to rebars.



### Earth pits

Lightweight plastic and concrete inspection pits for protecting and allowing access to earthing connections.



### FurseWELD

A simple, self-contained system using the high temperature reaction of powdered copper oxide and aluminum, within a mould, to form permanent electrical connections.



### Electronic surge protection

Our extensive range of equipotential bonding and transient overvoltage Surge Protection Devices (SPDs) provide fully coordinated protection against transient overvoltages. SPDs are able to cover all incoming and outgoing metallic service lines including power, data, signal and telecoms.

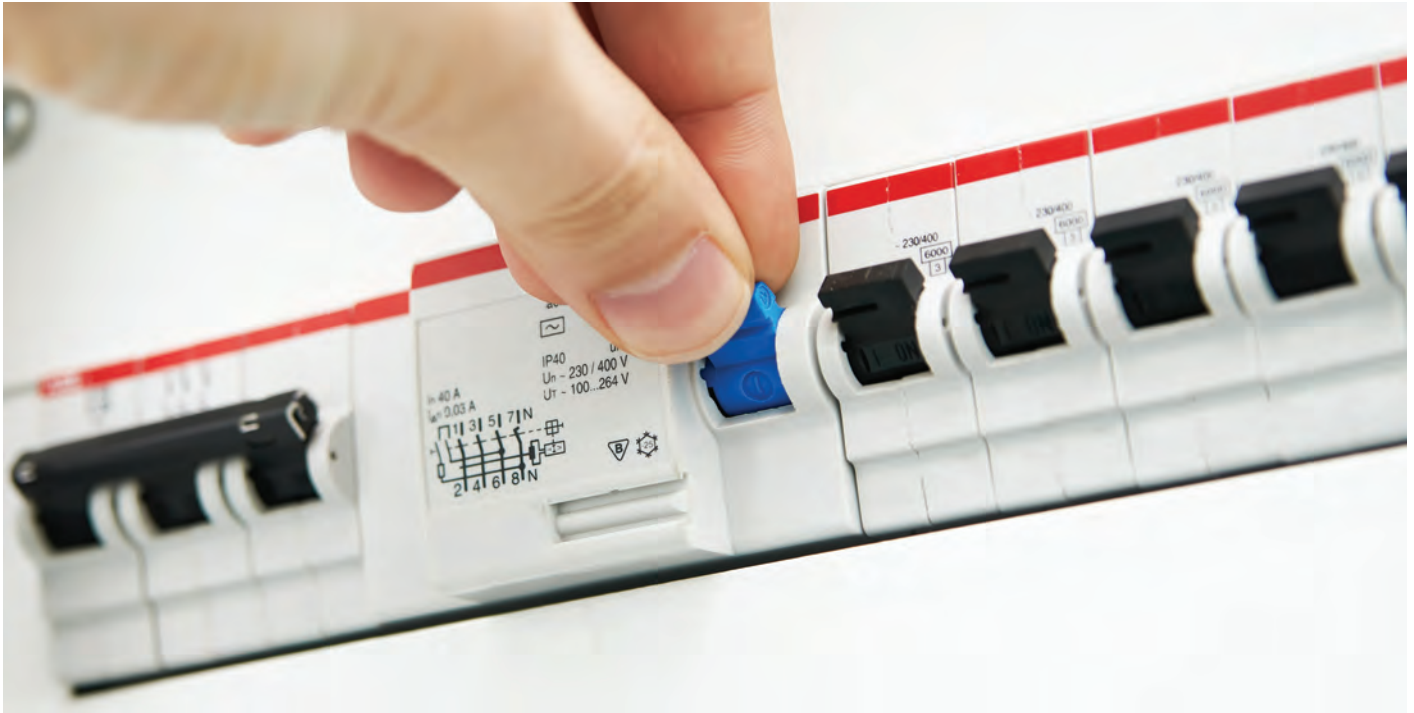




## Modular DIN rail components

### MCB's, RCD's, meters & surge protection

4



Our extensive range of modular DIN rail components, with protection, command, control and measurement functions, is ideal for meeting all the current requirements of electrical installations, in residential, tertiary and industrial sectors.

Core modular DIN rail components product lines include:

- Europa IP44, IP55 and IP65 junction boxes
- S200, S800, SN201 and F200 Series circuit breakers
- B Series EQ meters
- Protecta Distribution boards

For more details of the extensive range of ABB DIN rail component products please visit our website or contact us direct:

**[www.abb.com/lowvoltage](http://www.abb.com/lowvoltage)**

#### **Product brochures available:**

- Modular DIN rail components; MCBs, RCDs, meters & surge protection
- Enclosures; Automation steel, plastic, modular & adaptable
- Sub distribution; Panel boards, distribution boards & consumer units

# Modular DIN rail components

## Range overview

4



### S200 & S800 Series

Circuit breakers, with high breaking capacity. With intermediate trip position (TRIP) S800 circuit breakers differentiate manual actuation from overcurrent trip (Up to 63A or 125A respectively).



### SN201 Series

Circuit breakers including one pole and neutral in one module width up to 40A specific for household applications and tertiary sector.



### Panel boards

Our MCCB panel boards have been designed for easy handling and quick, simple installation. Compact MCCB design ensures maximum cabling area within the enclosures.



### F200 Series

Residual current devices up to 125A  
F200: Residential, tertiary and industrial.



### B Series EQ meters

Designed for single phase and three phase metering. Mounted on a DIN rail and suitable for installation in distribution boards and in applications where there is a need for reliable energy measurements.



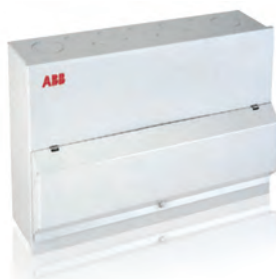
### DS271 Series

Providing protection against overload and short-circuit currents. It also assures protection against the effects of sinusoidal alternating earth fault currents; protection against indirect/direct contacts.



### Protecta Distribution boards

A range of MCB distribution boards allowing the option of metering in each section. This makes these units suitable for individual monitoring of the power and lighting circuits within an installation.



### Consumer units

Designed to suit installations in domestic and commercial installations, easy to install, attractive and highly reliable. Fitted with either sheet steel flap or clear plastic flap for visual inspection of components. Complete with neutral and earth terminals and DIN rail.



### Europa IP44 & IP55 junction boxes

Thermoplastic material with high resistance to heat, chemical and atmospheric agents. Manufactured in compliance with CEI 23-48 and IEC 60670 standards.

## Flexible conduit Cable protection systems



ABB has an excellent reputation for delivering high quality, robust yet flexible cable protection systems. With three specialist ranges we provide unrivalled solutions for protecting electrical, data and telecommunications cabling across a wide range of markets.

Combining innovative design with dedicated manufacturing facilities, ABB offer customers one of the world's broadest ranges of cable protection products and solutions. The range covers metallic and non-metallic flexible conduit systems for the protection of critical power and data cables.

ABB flexible conduit systems are available to meet the demands of a wide range of markets including:

- Commercial contracting
- Machinery / Mechanical
- Rail / Infrastructure
- Marine
- Security / CCTV
- Data cabling / Critical power

System solutions need to perform in a wide variety of environments from high temperature to freezing subzero conditions. The products are also designed and tested to withstand constant vibrations, water ingress and offer corrosion resistance.

For more details of the extensive range of ABB cable protection products please visit our website or contact us direct:

[www.adaptaflex.com](http://www.adaptaflex.com)

[www.kopex.co.uk](http://www.kopex.co.uk)

[www.pma-uk.com](http://www.pma-uk.com)

### Product brochures available:

- Flexible cable protection systems; For application with high requirements
- Flexible conduit systems & accessories; For critical power & data cable protection



# Flexible conduit

## Range overview



### Adaptalok ATS™ non-metallic fittings

Designed with an integral conduit seal and face seal washer for a rapid and highly reliable installation, as the seal can never be left out. Available as straight, 90°, 45°, 'Y' & 'T' piece fittings, with polyamide or nickel-plated brass threads.



### Adaptasteel metallic fittings

Nickel-plated brass connectors for effective, long-lasting connection to metallic conduit. Connectors are available in all common thread types, as straight fittings or with elbows for 90° or 45° joints.



### Adaptaflex / Adaptasteel conduit

Adaptaflex non-metallic conduit systems provide high flexibility & performance life. Conduit diameters range from 10 - 106 mm. Adaptasteel metallic conduit systems are ideal for more demanding & abrasive environments and come in galvanised or stainless steel.

5



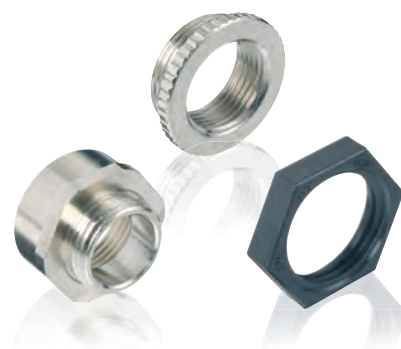
### PMAFIX connectors

High grade polyamide connectors with either polyamide or nickel-plated brass threads, for push-in assembly to achieve an ingress protection of up to IP68 and IP69K, static and dynamic.



### PMAFLEX non-metallic conduit

Highly flexible to semi-rigid, in light to heavy duty, ideal for technically demanding applications, including rail, automation and engineering. Sizes range from 6 - 125 mm diameter.



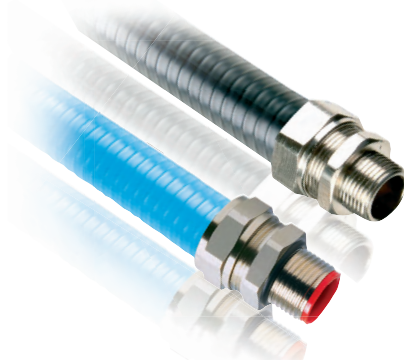
### Conduit accessories

For forming high quality electrical connections without external power or heat source.



### Kopex stainless steel conduit systems

Highly flexible uncovered metallic conduit constructed from helically wound galvanised steel. Flexible galvanised steel conduit is also available with a flame retardant PVC covering. For use with Kopex straight fittings.



### Kopex liquid tight conduit systems

An extensive range of conduits suited for liquid tight applications. All the conduits are fully flexible with exceptional mechanical strength, for use with Kopex liquid tight straight fittings.



### Contractor packs

A set of budget to professional convenience packs are available in 20 & 25 mm diameter conduit systems.

## Wire & cable management

### Premium cable ties



***Ty-Rap® Ty-Met™ Ty-Fast® TwistTail® Shield-Kon® Sta-Kon®***

ABB's broad offering of cable ties, connectors and insulation products make the task of fastening, bundling, clamping and managing wires easier and quicker for industrial applications.

When strength, aesthetics, reliability and performance are required, knowledgeable professionals turn to the original and the best source for cable management products.

Core wire & cable management product lines include:

- Ty-Rap® premium cable ties with steel locking barb
- Ty-Met™ stainless steel ties for extreme conditions
- Ty-Fast® & Ty-Grip™ cable ties
- Twist Tail™ tool-free cable ties

ABB products combine innovative engineering with high reliability to ensure the optimal solution is delivered across the broadest possible range of industries.

For more details of the extensive range of ABB wire and cable management products please visit our website or contact us direct:

**[www.tnb-europe.com](http://www.tnb-europe.com)**

**Product brochures available:**

- Fastening solutions; Easy bundle, secure and manage your cables
- Termination solutions; Easily & reliably connect your wires
- Heatshrink solutions; Insulate, identify and protect your wires and cables



# Wire & cable management

## Range overview

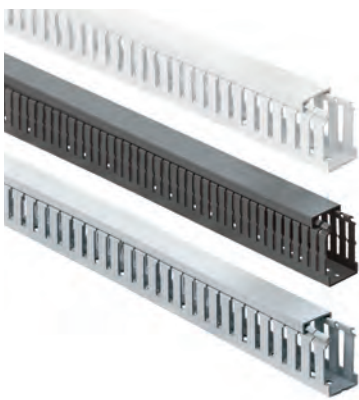


### Ty-Rap® cable ties

The premium cable tie, with a steel locking barb, available in a range of lengths and widths, with tensile strength up to 780 Nm. Ty-Rap® cable ties can be supplied in a number of colours options, to suit customer preference. Ergonomic fastening tools provide a rugged, long-lasting solution for rapid cable tie installation.

### Ty-Met® stainless steel cable ties

High mechanical strength, chemical durability and temperature resistance make Ty-Met® cable ties the ideal solution in more aggressive environments. Available coated or uncoated, in ladder, ball-lock and releasable types.



### ABB Trunking

ABB Trunking products offer a total solution for routing and concealing wiring in control panels.



### Ty-Fast® cable ties

All-plastic cable ties are available in a variety of formats, including extra long, releasable or with identification tag, for low cost cable tying.



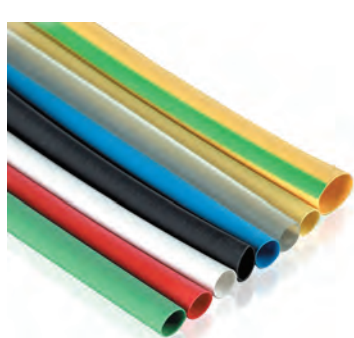
### Twist-Tail™ cable ties

Easy to install cable ties with a unique twist to break tail which leaves no sharp edges to scratch hands or cabling.



### Shield-Kon® shielded cable termination

An effective crimping solution for shielded termination on shielded cables.



### Shrink-Kon® heat shrink technologies

Heavy, medium and thin wall tubing for insulation of bare Sta-Kon® connectors and splices.



### Sta-Kon® solderless crimp connectors

Non-insulated and insulated solderless connectors, for high reliability with low installed cost.



## Switching & control

Enclosed isolators, starters & pushbutton stations,  
terminal blocks, plugs & sockets



ABB provide a wide selection of products for switching and control applications for use across many industries and utilities. Our broad range of isolators, starters, fuses, terminal blocks, plugs and sockets allow systems to operate with maximum efficiency and reliability.

When a combined network of robust, efficient, safe and reliable switching and control mechanisms are required you can count on ABB's expertise for products and solutions.

Core switching and control products include:

- HRC Series Fuses
- Star-Delta IP55 metal enclosures
- SNK & SNA Series terminal blocks
- TF42 thermal overload protectors

For more details of the extensive range of ABB switching and control products please visit our website or contact us direct:

**[www.abb.com/lowvoltage](http://www.abb.com/lowvoltage)**

### **Product brochures available:**

- Enclosed control products; Starters, heating / lighting, pushbuttons
- Industrial accessories; Industrial plugs & sockets
- Switchgear; Enclosed switch disconnectors and switch fuses
- Terminals; SNK screw & new PI spring technology SNA series & ADO terminals
- Fusegear; BS & DIN type HRC-fuse links OFFN, OFAF\_H, & OFAA\_GG
- Switchgear; OC rotary cam switches

# Switching & control

## Range overview



### Direct-on-line starters and isolators

IP65 plastic - IP55 metal enclosures using 100-250V or 250-500V coils for single and three phase installations, also options available with isolators.



### Star delta starters

Star-Delta IP55 metal enclosures conform to IEC 947-4-1. All three phase star delta starters, are complete with pushbuttons, and 100-250V or 250-500V coils.



### TF42 Thermal overload relays

For enclosed Direct-on-line and Star delta starters. Economic electromechanical protection devices for the main circuit, offering reliable protection for motors in the event of overload or phase failure. These devices have trip class 10.



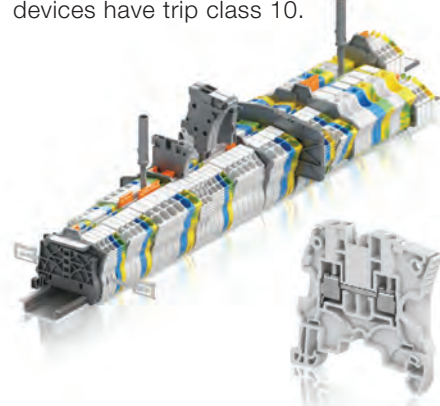
### Loadbreak & safety switches

IP65 rated Double insulated enclosures for three, four and six-pole switch disconnectors suitable for load break switching or isolation.



### Plastic pushbutton stations

IP65 thermoplastic control station complete with actuator, contact blocks and legend plate. Supplied fully assembled. Other variations are available on request.



### SNK Series terminal blocks

PI-Spring and Screw clamp technologies offer easy and safe insertion of both conductor and screwdriver achieving a perfect connection, without the need for retightening, thanks to the ABB exclusive anti-release system.



### HRC Series Fuses

Total safety for your cables, motors and electronics protection. Featuring low let through energy, low cut off characteristics, energy saving through low power losses, high breaking capacity and fault indication on the top of the fuse link for DIN fuses.



### Industrial plugs and sockets

Our industrial plugs and sockets focus on safety, alongside ease of installation and functionality for the required environment. Splash proof, water tight and corrosion resistance are just a few features that make these a first choice in any application.



### SNA feed through terminal blocks

Robust design & high quality standards (UL94-V0, RoHS). With Screw clamp technology you can avoid accidental releases due to vibrations, shocks or even abusive cable draw, minimising the need for retightening campaigns.



# Energy & lighting management

## Switches, sensors & controls



8

**Elkay**

ABB has built a reputation at the forefront of electrical manufacturing with a range of energy management products that can be used to control power and lighting sources within the home, commercial or industrial environments.

The Elkay Energy range provides architects, planners and electrical contractors a broad selection of simple but highly effective solutions to minimise the amount of energy used in all types of commercial and industrial environments.

In a domestic setting, the Elkay Range gives an excellent opportunity to increase style and functionality around the home, whilst making an important contribution to the reduction in carbon footprint.

Product lines include:

- PIR (Passive Infrared Sensor) timers
- Microwave (movement) timers
- Push button and touch timers
- Ceiling mount PIR's (Passive Infrared Sensor)
- Columbus® Pneumatic and electronic timers
- Outdoor IP66 rated timers
- Energy standard range

For more details of the extensive range of ABB power and lighting control products please visit our website or contact us direct:

**[www.elkay.co.uk](http://www.elkay.co.uk)**

**Product brochures available:**

- Energy management; Switches & control
- Domestic equipment; Movement detectors



# Energy & lighting management

## Range overview



### Columbus® timer / electronic timer

Columbus® timer & electronic timer are easy to fit and a cost effective way of automatically turning lighting off after a set period of time. Pushing the button switches the contacts and activates the time delay.



### PIR timers / outdoor timers

The PIR timer is a fully automatic device which controls various power loads through the detection of body heat. Activated by the detection of moving body heat, the lighting or power load will then stay on for a preset period of time.



### MasterLINE 70 & 110

Wall mounted movement detector with high quality of detection and a range of up to 12m front and 4m towards each side. Available in white, anthracite, brown and silver finishes.



### Touch timers / outdoor timers

The touch timer offers energy saving features at the lightest of touches. With the reliability of a fully electronic unit, with no mechanical moving parts, it has all the features of the Elkay push button timer unit with feather light touch activation.



### Ceiling mount PIRs

This PIR timer unit has been specifically designed for ceiling mounting and includes spring fixing arms for quick and easy installation. An option with fireproof capabilities is also available.



### Microwave / Remote timers

Offering high performance presence detection, with inbuilt Lux level and sensitivity adjustment. Ideal for use in inaccessible areas such as stairwells and corridors, as well as larger areas covering a range of up to 30m.



### Millenium wiring accessories

Thanks to a combined system, the switches of the Millenium series provide a comprehensive range of solutions for single rooms or whole building concepts. The square and ultra slim switches do not only add quality and style to the overall building, but are easy to install.



### MasterLINE 220

These innovative movement detectors have a range of 220° and coverage of 16m to all sides. Additional features include ground and rear-field detection, creep zone protection and automatic switch-on of light when stepping out of the door.

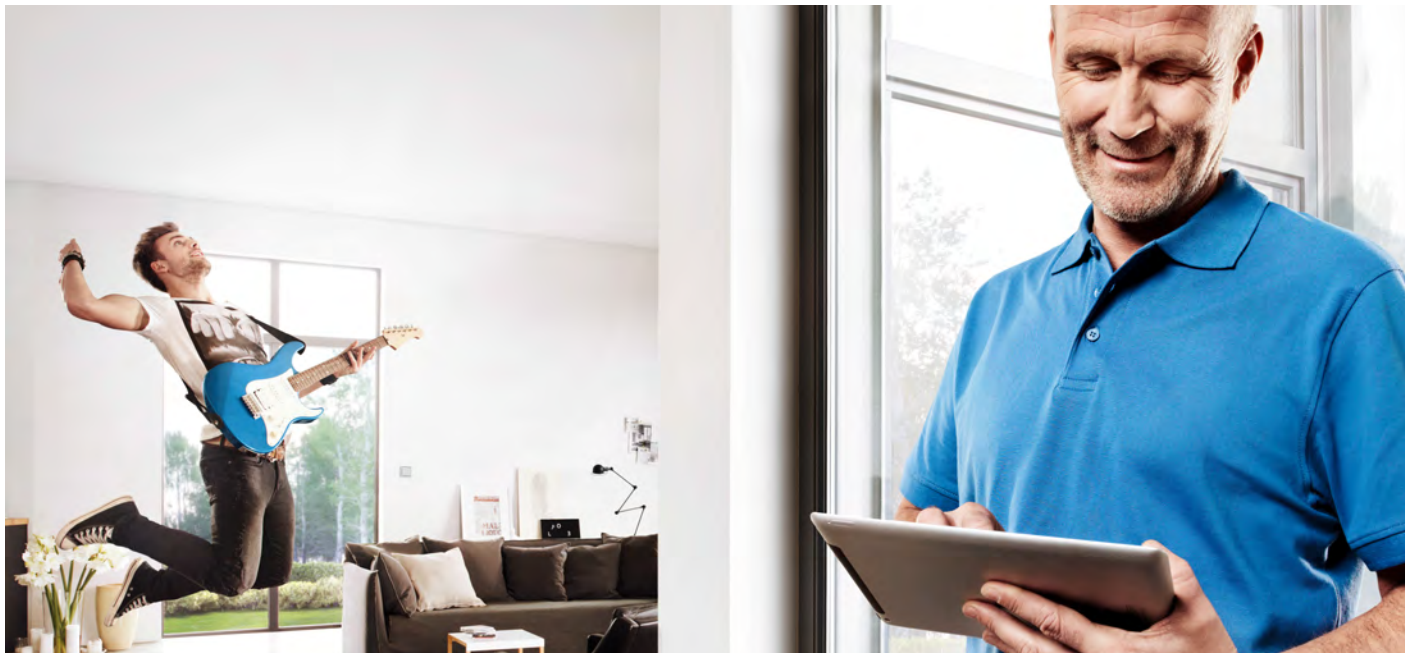


### Watchdog presence tech 360

Ideal for large-scale offices, underground car parks or dark corridors. Watchdog Presence tech 360 perfectly controls not only lighting systems but also heating, ventilation and air conditioning systems, with the utmost efficiency.

# Home automation

## Total network control



Installation and commissioning has never been easier. From start to finish, ABB-free@home® makes home automation easy. It saves electrical contractors valuable time and gives them a competitive advantage.

ABB's free@home® system offers ease of installation, affordability and enables homeowners to control some 60 functions within the home, such as lights, blinds, heating and door-entry systems, with pre-set programs or even remotely from a mobile device.

Many installer customers are now able to offer home automation for the first time due to our easily accessible training package and the simplicity of the technology, both for installation and for consumers to operate.

We provide on-line workshops with video tutorials, as well as offering a half days training to help you maximise the potential free@home® can bring to you.

For more details of the extensive range of home automation products please visit our website or contact us direct:

**[www.abb.com/lowvoltage](http://www.abb.com/lowvoltage)**

**Product brochures available:**

- ABB free@home; Making home automation easier than ever
- Millenium wiring accessories



# Home automation

## Range overview



### ABB-free@home Touch 7"

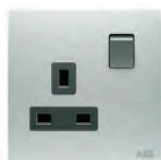
For ABB-free@home® this central control panel allows for up to 16 configurable functions and display of the video image of an ABB-Welcome outdoor station. SD card slot for extension of the picture memory. Suitable as room temperature controller extension unit, for surface mounting.



9

### Movement detectors

With select lens for detection with animal access. For automatic switching of ABB-free@home® actuators dependent on movement and brightness.



### Room temperature control

Control element with room temperature control function for controlling commercially available actuating drives or analogue actuating drives. With display of set-value temperature.



### Millenium accessories

Thanks to a combined system, the switches of the Millenium series provide a comprehensive range of solutions for single rooms or whole building concepts. The square and ultra slim switches do not only add quality and style to the overall building, but are easy to install.

### System access points

Allows the execution of Astro and time programs. Commissioning and remote control is executed via web interface or app. No additional commissioning software is required. Connection to the home network via WLAN client mode or via CAT cable.



## E-Klips

### Electrical & mechanical fixings



## E-Klips®

Manufactured in the UK, the ABB E-Klips range of spring steel fasteners offer a simple, effective and reliable method of fixing services to steelwork without the need for bracket making, drilling holes or the use of nuts and bolts.

10

ABB's E-Klips range provides a fixing for almost every application to main and secondary steelwork, including cabling, trunking, cable tray, conduit, ducting, pipework, suspended ceilings and lighting - delivering immense flexibility in installation.

E-Klips fasteners are specifically developed to keep installation time to a minimum, using only a hammer, screwdriver, spanner or pliers to complete the installation.

For more details of the extensive range of ABB spring steel fasteners please visit our website or contact us direct:

[www.tnb-europe.com](http://www.tnb-europe.com)

#### Product brochures available:

- Electrical & mechanical fixing systems; E-Klips steel spring fasteners

# E-Klips

## Range overview



### Purlin clips for chain and wire

For simple, secure suspension of loads up to 72kg from various styles of purlin, with connection via cable or wire.



### Girder clips for conduit

Ideal for securing 12 - 57 mm conduit discreetly above girders.



### Girder clips for cables

Clips of various styles for securing cables from 5 - 32 mm diameter.



### Self-aligning purlin clip for threaded rod

Designed to hang threaded dropper rods from purlin with automatic vertical alignment.



### Catenary wire, tensioners and accessories

Including catenary wire, thimbles, bulldog grips, tensioners and suspension plates.



### Pipe hangers

Lined, unlined and filbow types are available, to enable suspension from threaded rods.



### Suspended ceiling clips

Zinc coated or white painted, for suspension of loads up to 22kg from false ceiling grid.



### Girder clips / clamps for threaded rod

Suitable for hanging threaded rods from 6 - 12 mm diameter.



### Decking clips

For suspension from decking, either directly or with addition of chain, wire or rod.

# Emergi-Lite

## Emergency lighting & central battery systems



### EMERGI-LITE®

Emergi-Lite is the leading UK life safety range from ABB, delivering state-of-the-art emergency lighting systems and products to the market. Protecting lives, critical processes and property in the most demanding safety-critical applications.

11

With emphasis on innovative product development supported by scheme design and consultation, Emergi-Lite ensures an effective solution to emergency lighting is achieved across the broadest scope of installations.

From design, installation and inspection, through to maintenance and renovation Emergi-Lite products offer state-of-the-art safety technology and proven electrical components that meet global safety and reliability standards.

Product ranges extend from the high value specification brands such as Serenga, Horizon and Aqualux, through to our purpose-designed LED solutions for the distribution market, Escape Line.

In addition to our range of emergency lighting offered, we also provide central battery systems with our renowned EMEX ranges.

For more details of the extensive range of ABB emergency lighting and central battery systems please visit our website or contact us direct:

**[www.emergi-lite.co.uk](http://www.emergi-lite.co.uk)**

**Product brochures available:**

- Emergency lighting & central power supply systems



# Emergi-Lite Range overview



## Serenga 2

A high power, low energy consumption LED solution, specially designed lens for optimised light distribution. Modular components allow a First-Fix installation.



## Guideway

Innovative and stylish product design, quick and simple installation, inherent energy efficiency and minimum maintenance.



## Way-Fer emergency lighting

Low-profile emergency luminaire or exit sign (LED or 8 W T5), for commercial or light warehousing use.



## Previx

A high grade polycarbonate back lit LED emergency exit sign/ emergency luminaire available with IP40, IP65, IP67 and IK10 ratings.



## Aqualux

Hard wearing, high output luminaire and exit sign range for both interior and exterior use. Impressive light output even at high ceiling heights. Ideal for projects requiring heavy duty emergency lighting.



## Horizon

A simple, unobtrusive LED downlighter with high lumen output and excellent spacings. Delivers excellent spacings, with options for both escape routes and open areas.



## Cordona

This IP65 rated emergency lighting (LED or 8 W T5) provides a robust, weatherproof solution, ideal for industrial use.



## Hazard-Lite

An explosion proof and waterproof emergency exit sign rated to IP66 and IEC529, suitable for both zones 1 and 2. Corrosion resistant light alloy body and end cap with a polycarbonate overtube.



## EMEX Central power supplies

AC/AC & AC/DC central power supply systems are available as part of our EMEX range. Ensuring continuous power, avoiding unnecessary down time costs as well as health and safety implications.

# DTS

## Hazardous area lighting & enclosures



DTS provide a complete range of explosion proof lighting, emergency lighting, enclosures, junction boxes and control panels. Specifically designed to cope with harsh environments providing reliability, longevity and high performance for critical systems.

DTS products provide solutions covering all zones of potential explosion gas and dust atmospheres. They are compliant with the most stringent National, European and International regulations including IECEx, ATEX and ISO 9001 standards.

Our products can be used in a wide variety of industries across the globe. Specialising in lighting and enclosure solutions for:

- Hazardous Environment Protection. Full range of IECEx and ATEX certified lighting and enclosure solutions for gas and dust areas
- Corrosive and harsh environment protection. We offer special materials and coating options for protection in the harshest environments such as sea salt, UV radiation etc.
- Total project cost reductions, with smart and modular product design reducing installation and maintenance cost of our luminaires
- Complimentary to DTS we also offer Kopex-Ex, a full range of nylon and metallic cable protection systems ATEX, IECEx, UL/CSA approved (see page 28)

For more details of the extensive range of ABB hazardous area lighting and enclosures please visit our website or contact us direct:

[www.tnb-hazardous.com](http://www.tnb-hazardous.com)

### Product brochures available:

- Light fittings, boxes & custom built control panels for hazardous areas



## DTS Range overview



### Hazardous area tubular & self contained light fittings

Our tubular LED fittings offer an operating life of more than 100,000 hours, output of 5,000 lumens with 100 percent yield, and components mounted on a sliding gear tray to facilitate installation and maintenance, which may be retrofitted into existing fixtures. Fittings are manufactured with low-copper, marine-grade aluminum castings, and are finished with offshore-grade paint.



### Floodlights & beacons

Manufactured from marine grade aluminum alloy (copper free), with toughened borosilicate glass and high output beams. Robust and durable through the severest industrial applications.



### Hazardous area enclosures (Junction boxes)

DTS Ex d control panels are designed, manufactured and tested according to the ATEX protection type Ex d. (Ex d type of protection: Flameproof enclosure). They can be composed of a wide variety of standard components which are switches, contactors and relays for instance.



### Linear & recessed lighting fittings

Constructed of glass reinforced polyester for high impact strength, UV protected polycarbonate diffuser to resist harsh environmental conditions.



# Kopex-Ex

## Hazardous area cable protection systems



Kopex-Ex conduit systems have been specifically designed to provide the optimal, safe solution to cable protection in hazardous areas.

Kopex-Ex flexible conduit and connectors deliver significant safety benefits across a range of industries where hazardous areas exist or hazardous manufacturing processes are performed, including oil & gas, petrochemical, food & beverage and pharmaceutical industries.

For more details of the extensive range of ABB hazardous area cable protection please visit our website or contact us direct:

[www.tnb-hazardous.com](http://www.tnb-hazardous.com)

13

Our products include metallic and flexible nylon conduits and fittings - meeting the strictest worldwide standards for use in explosive hazardous atmospheres including ATEX/IECEX, UL and CSA.

#### Product brochures available:

- Flexible conduit systems, cable glands, & accessories for hazardous areas

# Kopex-Ex Range overview



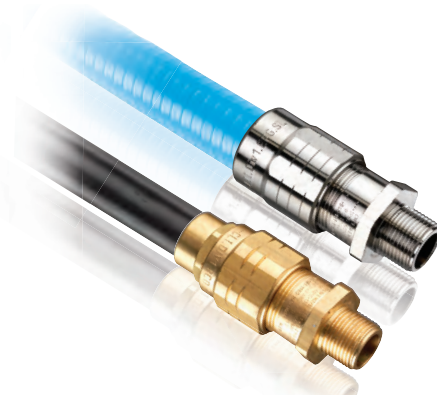
## Non-metallic explosion proof conduit

Kopex-Ex non-metallic nylon conduit has approval for use in Exe applications.



## Metallic explosion proof conduit

Kopex-Ex metallic conduit with galvanised steel core is available with a number of coatings for varying applications within hazardous areas.



## Liquid tight conduit

Robust conduit made from galvanised or Stainless Steel 316 core with a specialised coating for increased protection from dilute acids, alkali's, and hydro-carbon products. Our low fire hazard conduit which is fully compliant with London Underground, and MOD specifications.



## G1 glands

Constructed from either brass or stainless steel, (optional nylon seal with epoxy resin, for Group I 90°). The Group I Flameproof Gland is a high quality, high specification product, ideal for Ex I & II 2 GD gas and dust, Exde IIC and Exe II applications.



## Universal glands

Manufactured from brass, stainless steel or nickel plated, and with an epoxy resin barrier, the Universal Gland can be combined with rigid conduit, allowing it to be used in Class I Div I applications under CEC or NEC regulations.



## Cable glands

Covering a wide range of applications, we have cable glands that meet various certifications. Our fitting designs are of superior-quality reducing installation time, costs and reliability.



## Thread converters

This range of converters meets the latest ATEX / IECEx & CSA / UL standards. All the standards are marked on the product around the main body, allowing for them to be seen easily once installed.



## Stopping plugs

Manufactured from either Brass, Nickel Plated Brass, Stainless Steel or Nylon). Also available with Hex head or Dome head, featuring increased approval levels.



## Accessories

A full range of accessories is available to support installations including enlargers, reducers and seals.

# Contact us

## ABB Limited

Low Voltage Products Division  
Tower Court  
Foleshill Enterprise Park  
Courtaulds Way  
Coventry CV6 5NX  
National Tel: 0333 999 9900  
National Fax: 0333 999 9901  
E-Mail: LV.Enquiries@gb.abb.com

[www.abb.com/lowvoltage](http://www.abb.com/lowvoltage)



**Note:** We reserve the right to make technical changes or modify the contents of this document without prior notice. With regard to purchase orders, the agreed particulars shall prevail. ABB AG does not accept any responsibility whatsoever for potential errors or possible lack of information in this document.

We reserve all rights in this document and in the subject matter and illustrations contained therein. Any reproduction, disclosure to third parties or utilization of its contents – in whole or in parts – is forbidden without prior written consent of ABB AG.

Copyright © 2015 ABB  
All rights reserved